

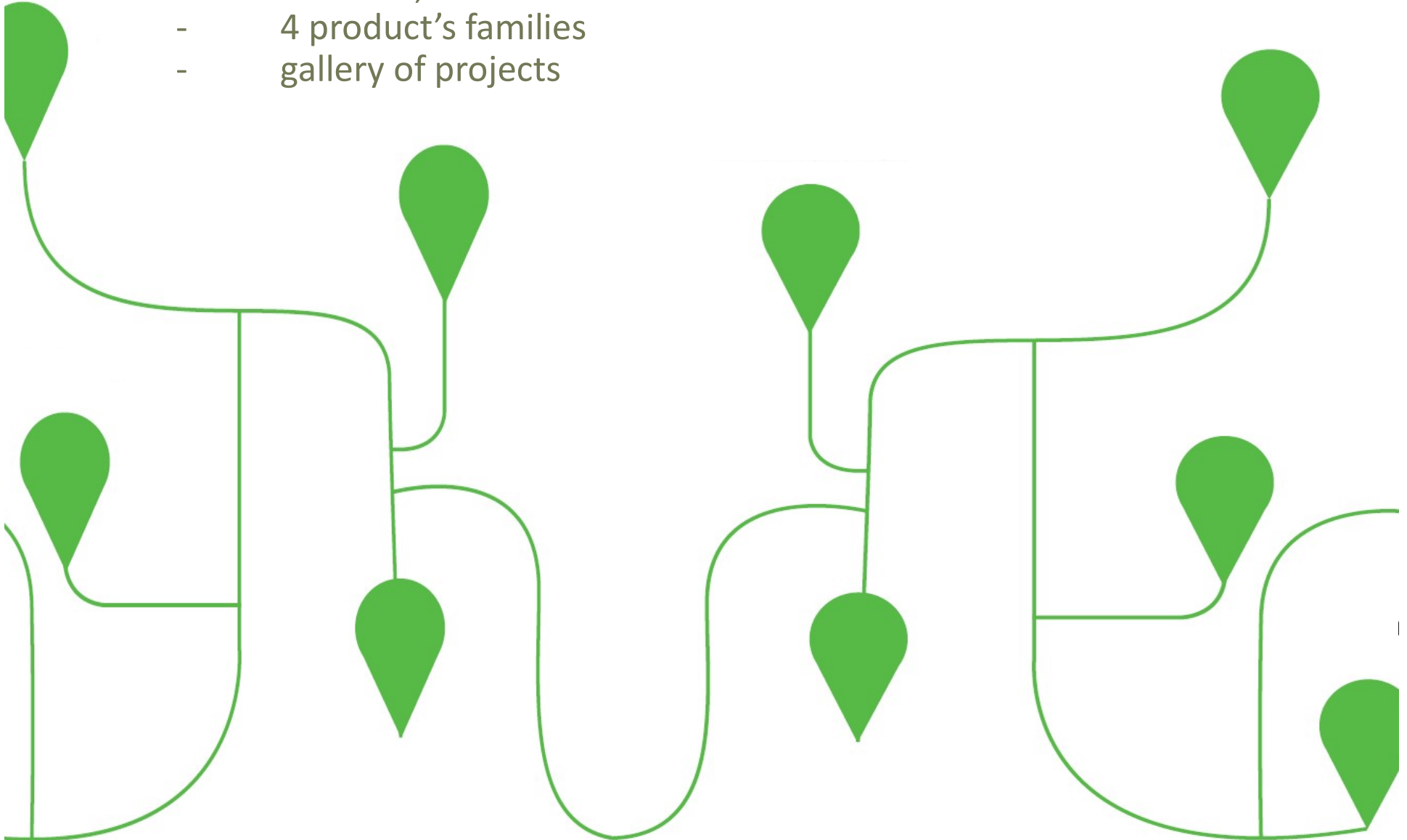


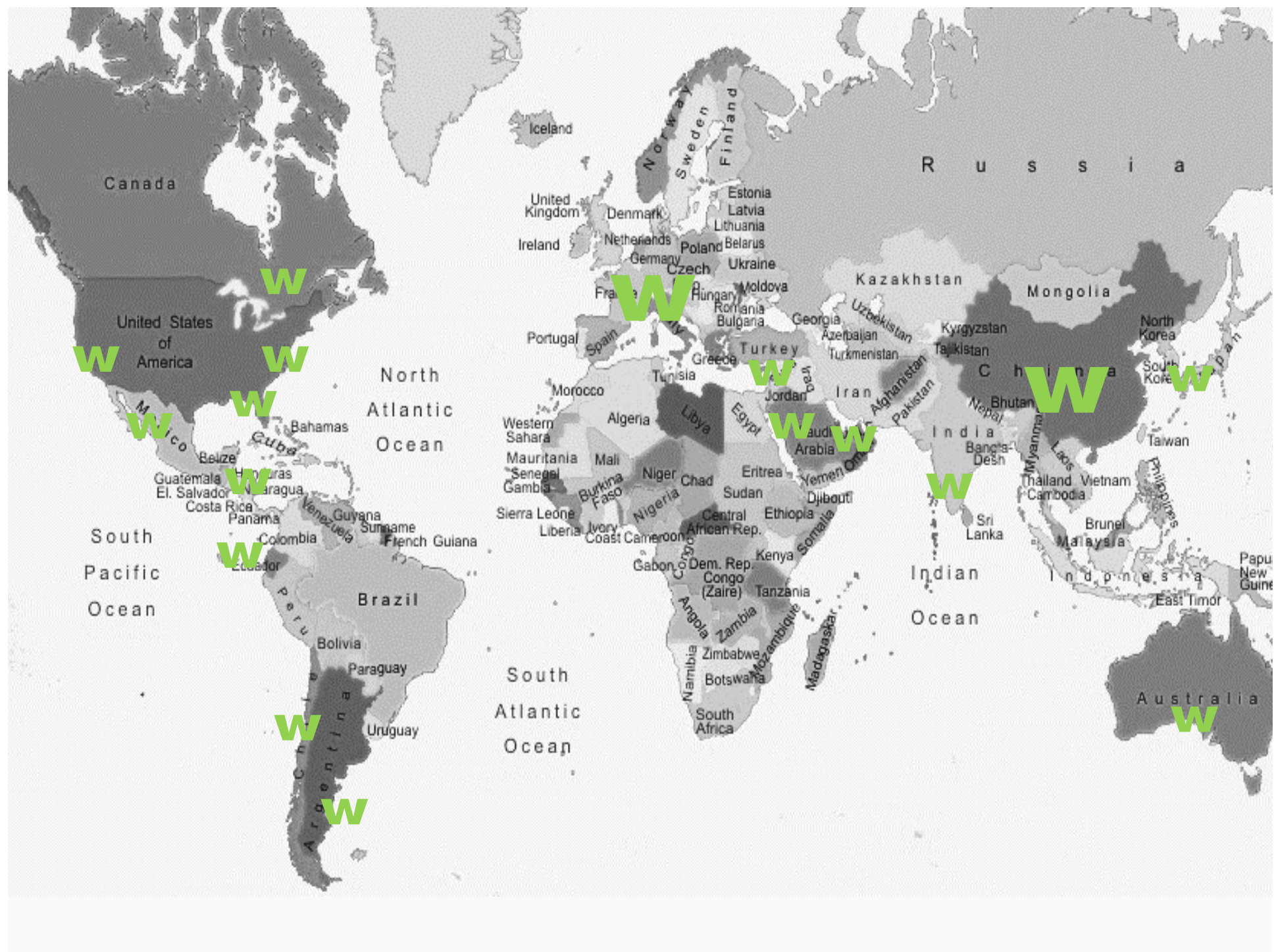
imagine
your
future



SUMMARY:

- the WoodN Group – international presence
- WOODN, the material's composition
- WOODN, the material's features
- 4 product's families
- gallery of projects





WOODN

INNOVATION
KNOW HOW
QUALITY
A WINNING FORMULA





SELFEXTINGUISHING



WATERPROOF



PLEASANT TO THE TOUCH



ECO FRIENDLY



DIMENSIONAL STABILITY



LIGHTNESS



THERMOFORMABLE



FORMALDEHYDE EMISSION FREE



WOODWORM AND PARASITES PROOF



FIRE RATED



HURRICANE SAFE



WOODN
SPECIES UNICA

[Woodn aeternus]

Outdoor Decking



WOODN
SPECIES UNICA

[Woodn modulatus]

Cladding and Ceiling



WOODN
SPECIES UNICA

[Woodn versatilis]

Sunscreen – Louvers - Fences



WOODN
SPECIES UNICA

[Woodn ornans]

Indoor Cladding - Mosaic



liscia - smooth



color 01 /
Bianco Carrara



color 02 /
Lagorai



color 09 /
Cuba



color 13 /
Myanmar



color 28 /
Grigio Londra

spazzolata - brushed



color 01 /
Bianco Carrara



color 02 /
Lagorai



color 09 /
Cuba

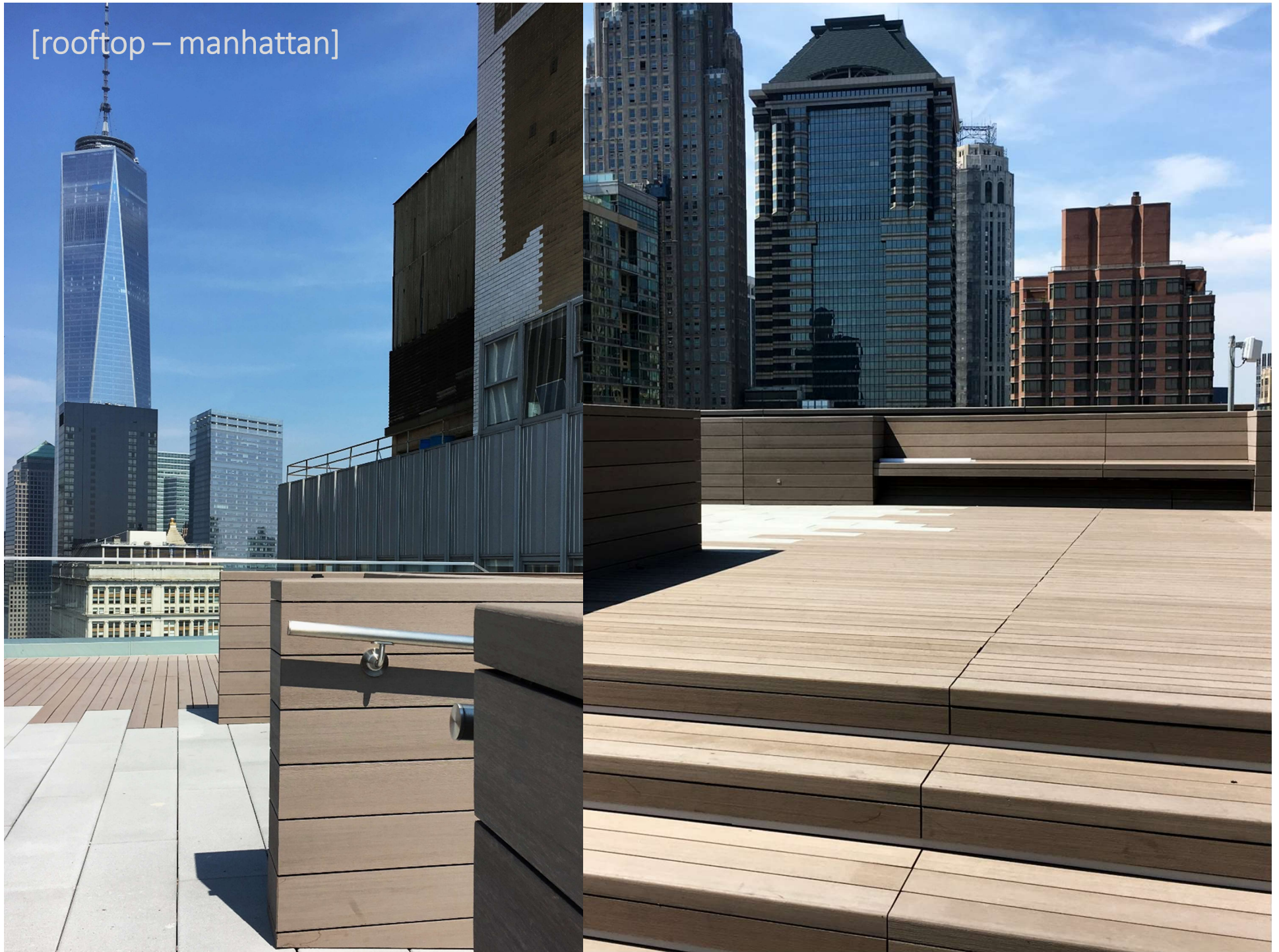


color 13 /
Myanmar

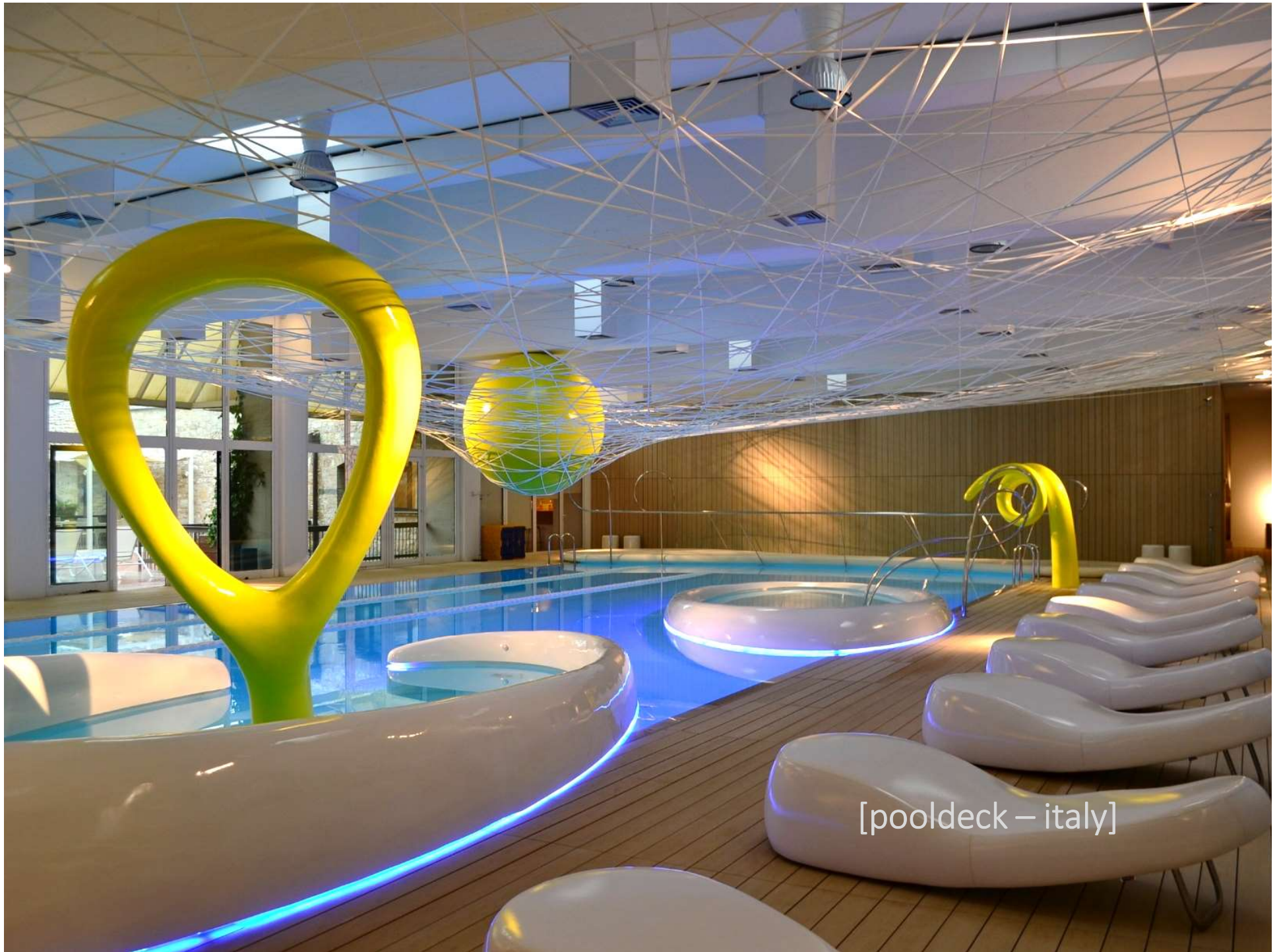


color 28 /
Grigio Londra

[rooftop – manhattan]







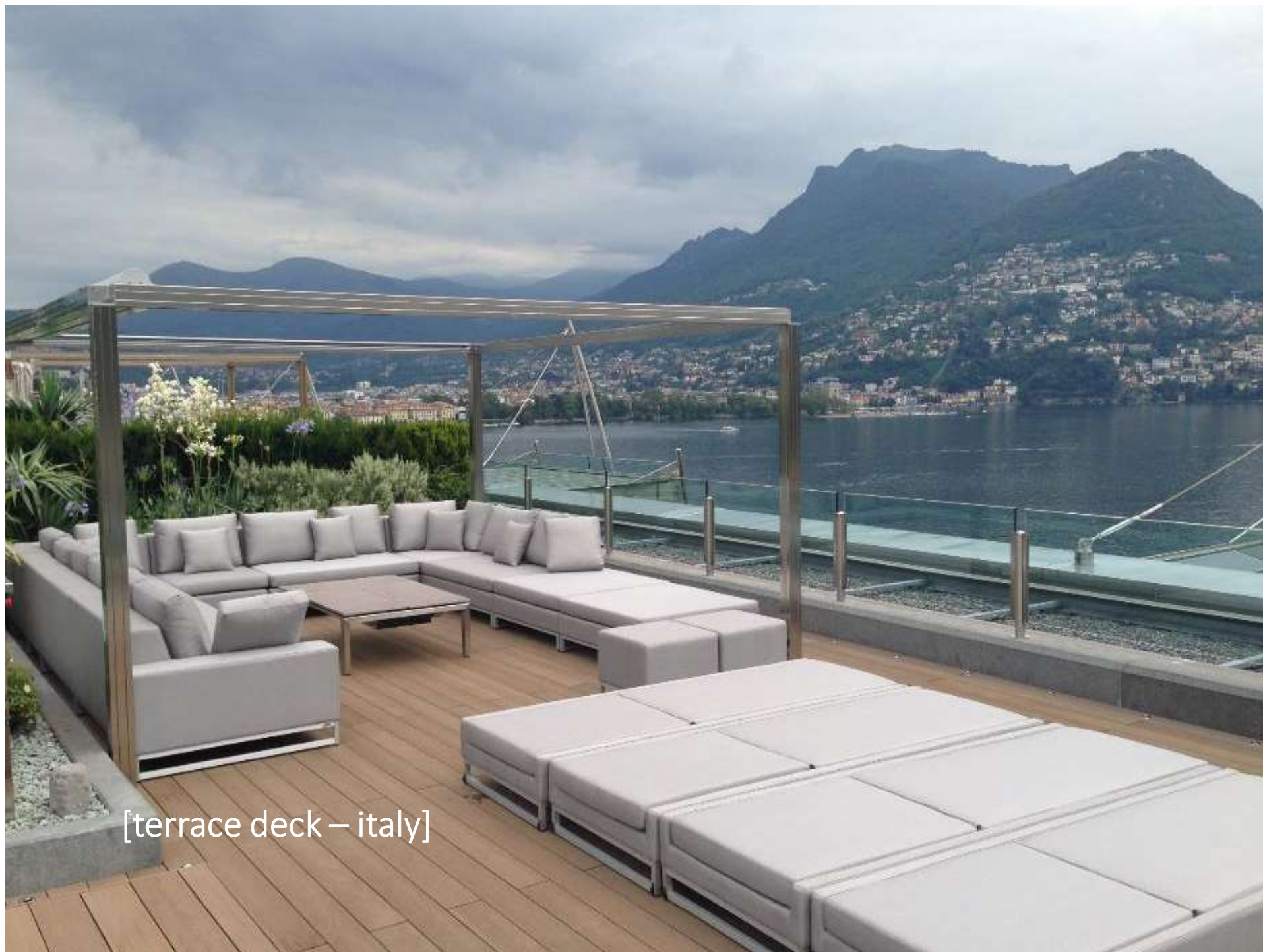
[pooldeck – italy]



[pooldeck – italy]



[rooftop deck – italy]



[terrace deck – italy]



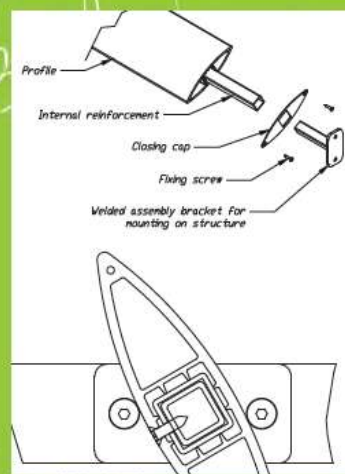
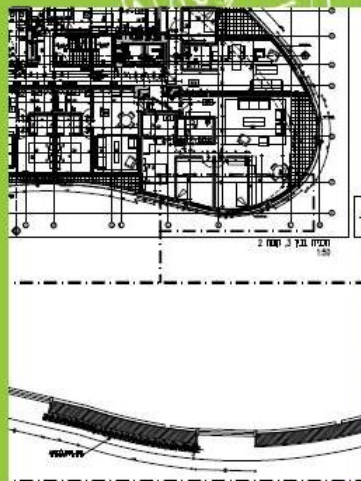
[pool deck – italy & lebanon]

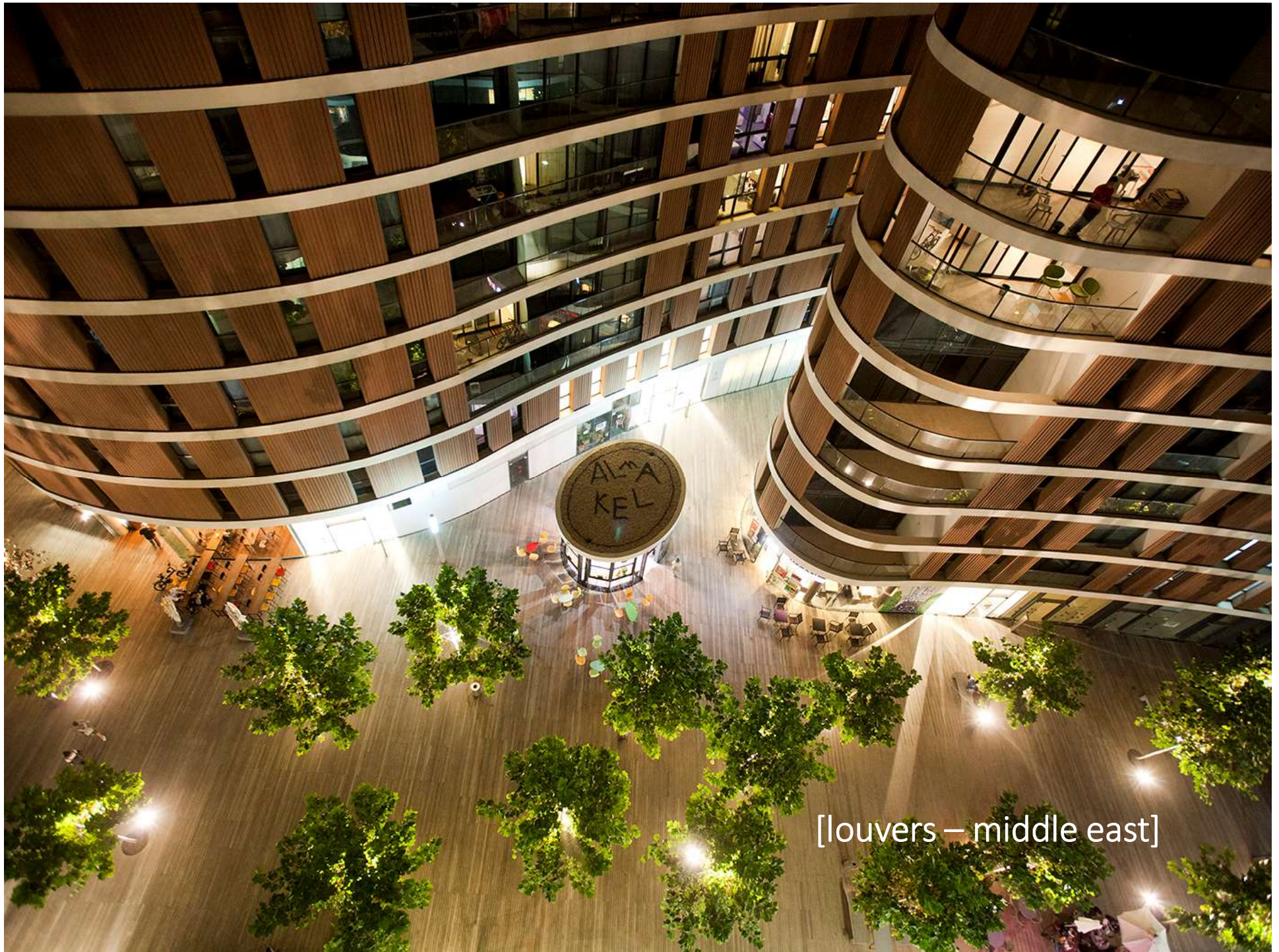


WOODN: A QUALIFIED SERVICE FROM CONCEPT TO ITS IMPLEMENTATION

The experience gained in managing complex contracts, regarding both vertical and horizontal coatings, allows us to provide assistance not only during the design phase but also when studying packaging and logistics up to the construction site.

VERTICAL LOUVERS RESIDENTIAL BUILDINGS ARCHITECT ILAN PIVKO





[louvers – middle east]



[louvers – Middle East]

"רביעיית פלורנטיין" מתוה מחסם דומיננטי ואיקוני של מגורים, מסחר ושטחי ציבור בשכונה הדרומית בעיר. בנוסף להיותו יוצא דופן בעזרתו האמפית והרבות העיצובית שלו, הוא משמש קטליזטור ציורי ומחולל שינוי, טבעי לתהום למיקו השכונת החדשה, למרקמה ולאווירת החיים בה, על ידי יצירת מחסם חדש ומעודכן, שמשתלב היטב עם תכניתו הציורית והחזונה לבני האזור.

מחנכתי המבנה שמו על שבתות הבניה הידועה, וקווי המתווה הישן בעוצמי 35 עד 50 כולל רחפי המבט על הקרקע החדש בעל מניין רחב של שכונות בילוי וחינוך ואקסטי. בשכנים שלחם מופשטות מטרות כחומה קונסרו המבנים, כדי לסייע בהחלפת על חודי המבנים ועל המבנים עצמם. במרוקם מתוכננת המרת אשמה בין אשמה ישנה לרשימה חדשה מחומה.

בדירות מוקדמות חלונות בעלי זכוכית מיוחדת חסמת UV-B, UV-A, בעלת ערכים חסמים ואקוסטיים השומרים על טמפרטורות החדר ומבנים קרוי III ו' ו' מלחודר ללנים הדירות.

בפניקס 260 דירות, ששטחן נע בין 30 מ"ר ל 450 מ"ר, ונחלקו הדירות מרכז מוסטרי רח של יחידות בנות 2 וחודים, כמו גם דירות בנות 4 ו-3 חודים ולסניאדורים. היסוד הקרקע מציגה 2,500 מ"ר לסטור, עם כ-40 חנויות ובטילוב של אחוזי שטח וביילי, כמו קפה ולחוד, ביקול וכו'. היא נגישה לסניאד חופשי של העירכה, במסגרת של ארבעת הבניינים מתוכננים גם סטא וחדר כושר, לשינויים הידורים וחומכי השכונה וחדרי סונאור וחומים.

החיתות הבניינים מחומים המרוקמים מולידורים, המכללים מיני במבוק, חומר שגבחר בקפידה על מנת להבטיח עמידות כתואה חיצונית קרית שמש. דג על רחב ידום היקום בין הבניינים ותורם לחוויית הדיקור והשקיה במבוק.

המחסם ממוקם על שטח של 7 חומה בפניה הרחבה שלטה ואביבאל במסגרת פלורנטיין שבו לא אביב חוד חומה. חקיקה שיווקית את המפרט לשני פשרלים, המבנה הפירוקט הציל ארבעה בניינים עם חלוקה מעובלת וחומטיות, המרכיבת את המבנה הכללי והאפטיית את נטיית שדרת העצים הראשית, שמכבת מתפללות "סמטאות" בין הבניינים.

הקונספט של הפירוקט הוא שכונת פלורנטיין, שכונה שהיא חסומה היחידה בתל אביב המתוכננת כדוגמת ערים אירופאיות, הבנויות כמבוק מוקד ב-4 דחומה, הבניינים בו בנויים על על חומה וגונקום זה לה בקיר משותף. נוסח "רביעיית פלורנטיין" באזור דוגמ, כדי בלוקים, ובניינים רחב ראשי ומטאטות, למבוקות הצלילות מורדים הקומות הקרקע – מסחר.

SISTEMI OSCURANTI FRANGISOLE

I sistemi oscuranti frangisole si contraddistinguono da sempre come elementi di design atti a proteggere gli ambienti interni dai raggi solari senza privarli dell'aria e della luce. Semplici ed eleganti, i frangisole WoodN vengono studiati per garantire le condizioni ideali in ogni ambiente e per valorizzare i progetti sino a diventare uno dei principali accenti architettonici. Lo sviluppo tecnico ad hoc dei fissaggi, l'estetica naturale dei profili e le loro elevate proprietà meccaniche, nonché la resistenza all'acqua e al fuoco, rendono ogni applicazione unica dal punto di vista del design e della resistenza al tempo. Grazie poi alle loro molteplici forme, i brise-soleil WoodN si adattano alle strutture degli edifici e spaziano dagli imponenti grattacieli sino alle piccole residenze private, assicurando una ventilazione naturale e contribuendo altresì ad un risparmio energetico.

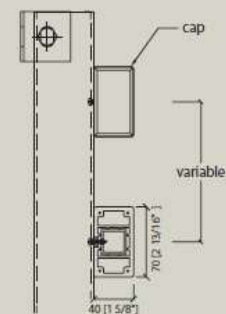


SHADING SUNSCREEN SYSTEM

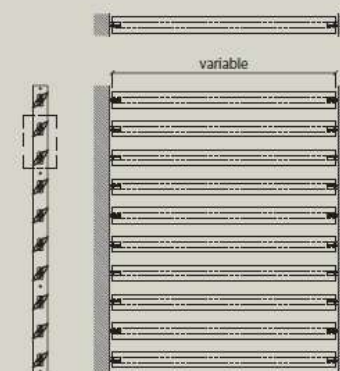
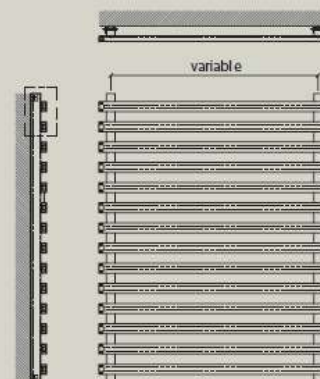
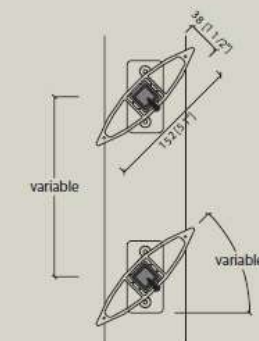
The Woodn shading systems are design elements aimed to protect the interior spaces from the sun, without depriving them of air and light. Simple and elegant, the Woodn sunscreens are designed to guarantee ideal conditions in any environment and to enhance the architectural features of each projects.

Customized technical development, natural aesthetics of the profiles together with their high mechanical properties and resistance to water and fire, make each job unique. Thanks also to their multiple shapes, the brise-soleil Woodn can suit to any buildings' structure, from high rise buildings to smaller private residences, providing natural ventilation and also contributing to energy saving.

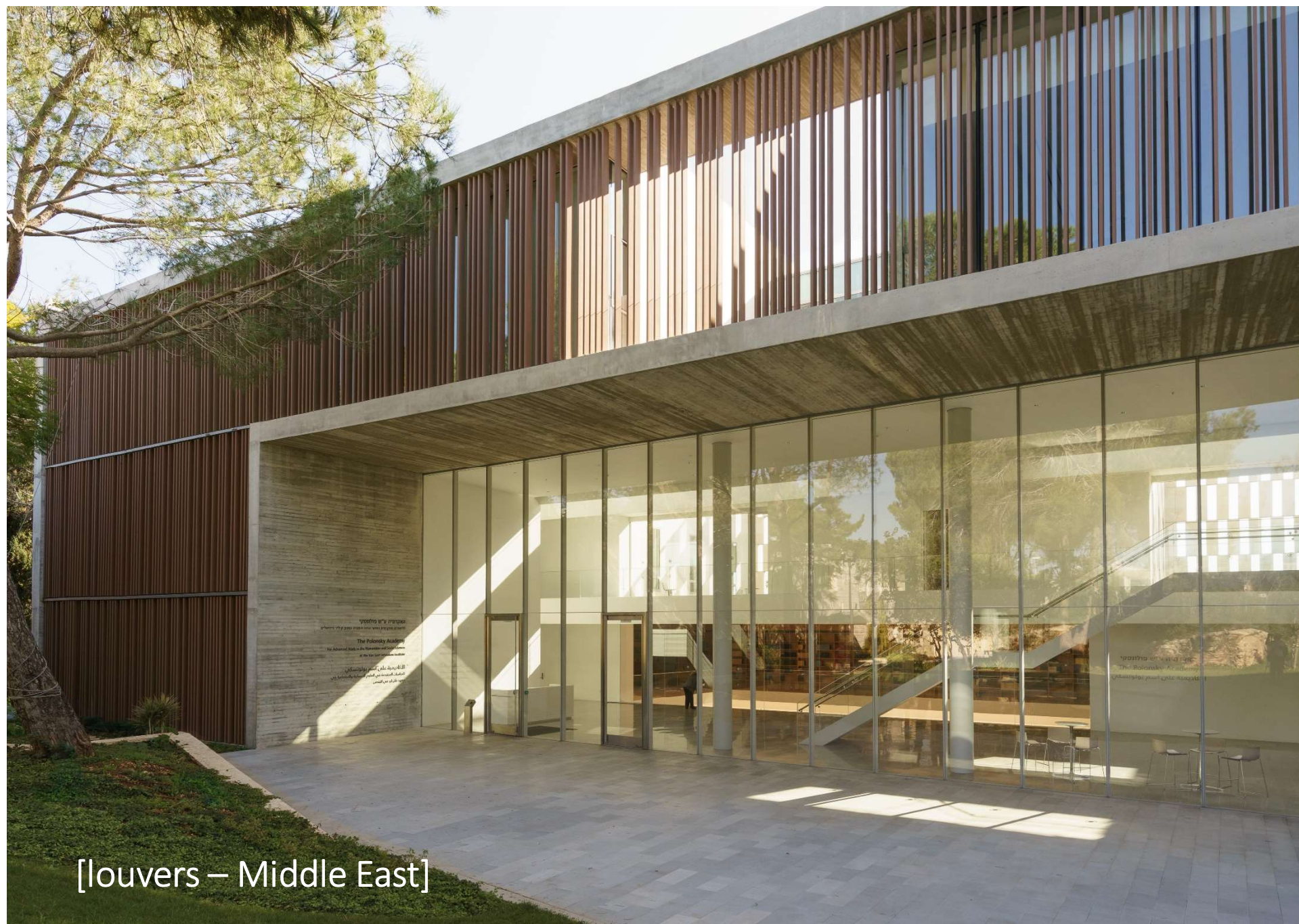
JF7040



JF15238



WOODN

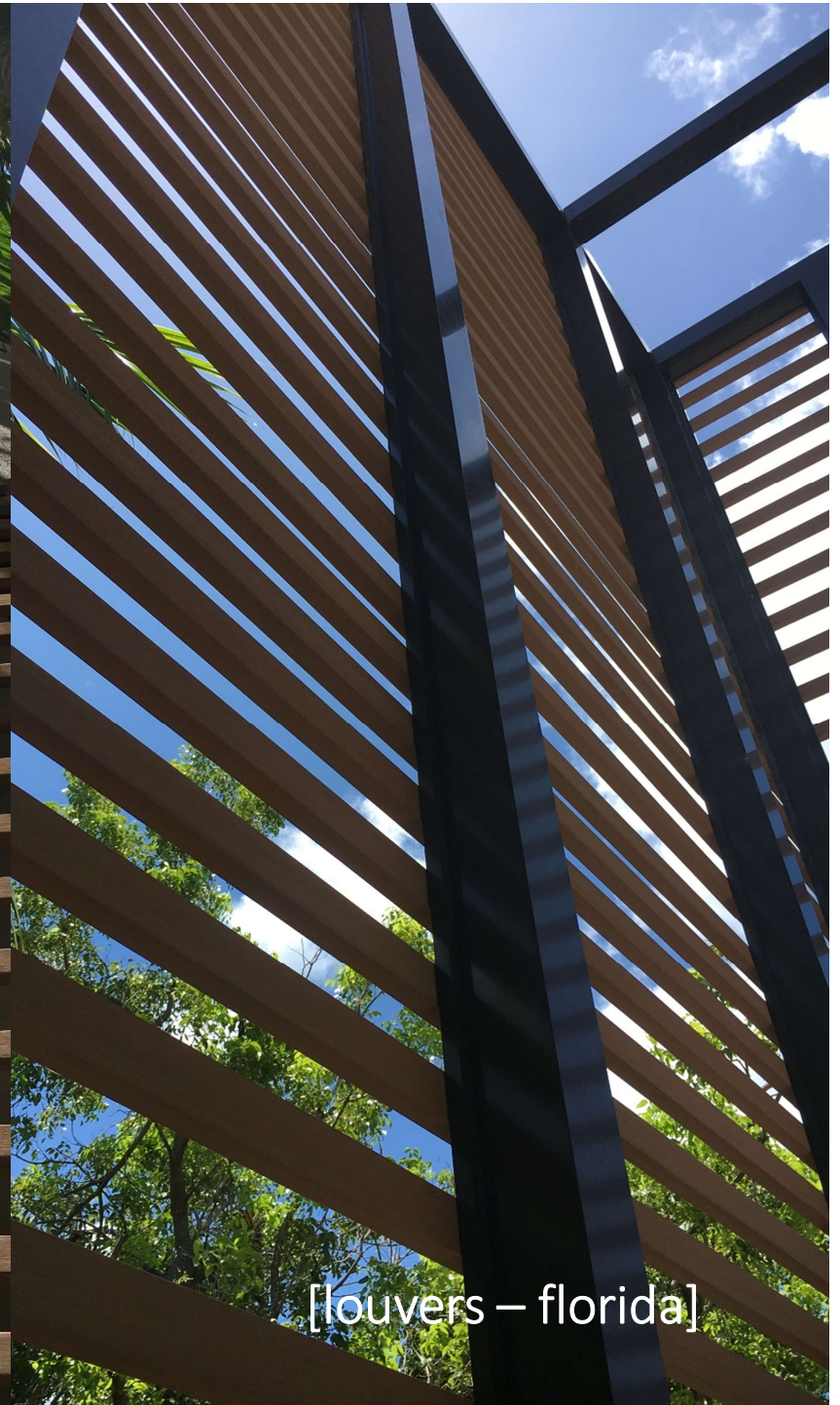


[louvers – Middle East]

[louvers – guatemala]



[louvers – guatemala]



[louvers – florida]

[louvers – florida]





[louvers – UAE]

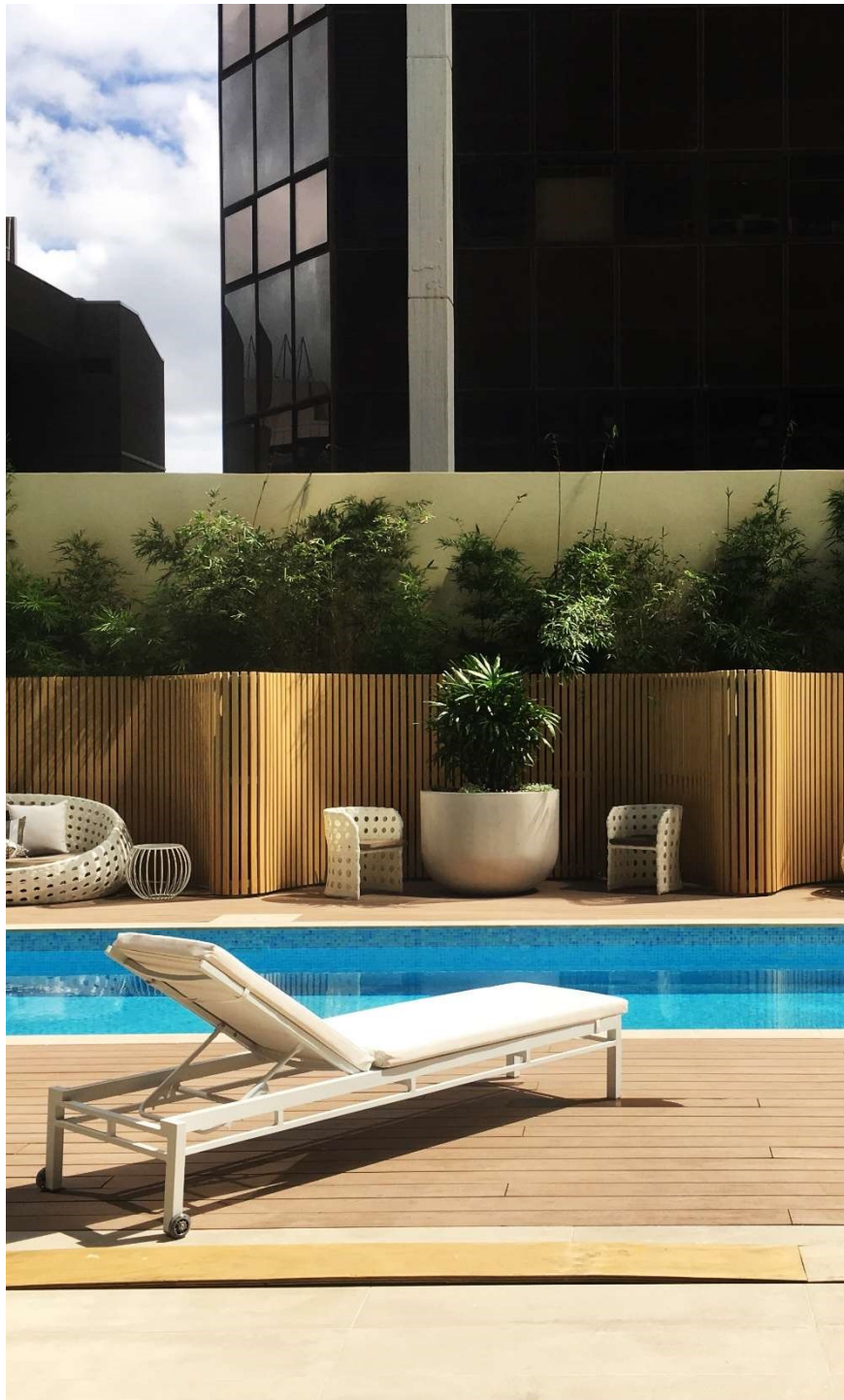


[louvers – UAE]



[louvers – italy]

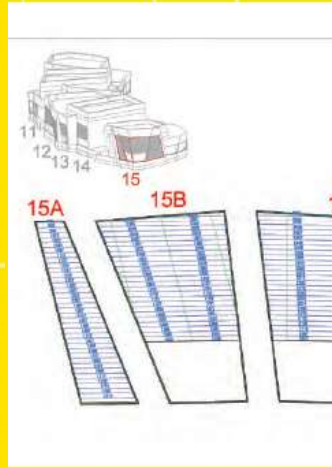
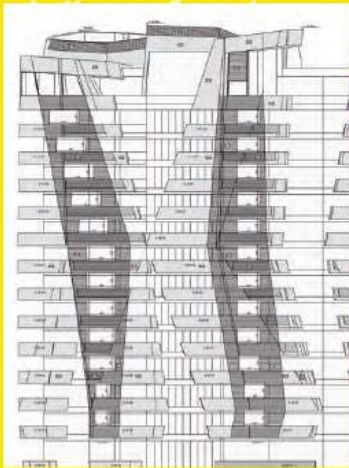




[louvers – australia]

WOODN: A PARTNER FOR ARCHITECTS

A team consisting of Structural Engineers and Designers supports the Architects from concept to implementation. Starting from the customer's project in its technical/functional and aesthetic aspects, our engineering framework supports the Architect through rendering arrangement, evaluation of application systems, and creation of mock up.





[louvers – italy]





[louvers – colombia]



[louvers – panama]



[louvers – moldova]



[louvers – italy]

[louvers - italy]





[louvers - australia]





[louvers - italy]

SISTEMI DI RIVESTIMENTO

Lo strato più esterno della facciata di un edificio viene solitamente rivestito per conferire non solo una finitura estetica, ma anche e soprattutto un'appropriate protezione dagli agenti atmosferici. I sistemi di rivestimento WoodN uniscono leggerezza e facilità di installazione, garantendo al contempo un alto valore estetico.

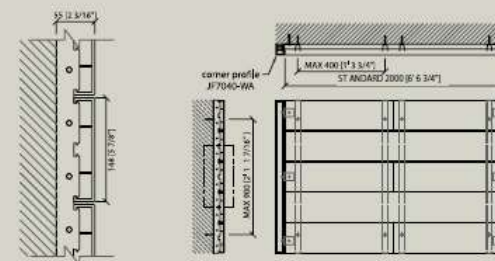
Sottoposti a test che ne certificano la resistenza al fuoco, ai raggi UV e persino agli uragani, i rivestimenti WoodN richiedono la minima manutenzione, sono facili da pulire e non necessitano di alcuna verniciatura. La bellezza estetica di WoodN lo rende adatto ai progetti più innovativi e le numerose installazioni a qualsiasi latitudine testimoniano la versatilità e l'affidabilità del materiale in qualsiasi ambiente climatico.



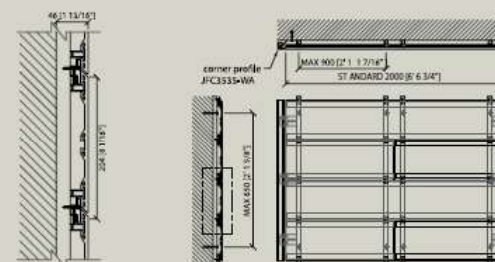
CLADDING SYSTEM

The external skin of a building is usually dressed up to grant not only an aesthetic finish, but also an appropriate protection from weather conditions. The WoodN cladding systems combine light weight and ease of installation, ensuring always a high aesthetic value. Our profiles have been tested for fire resistance, UV rays and even hurricanes. The WoodN claddings require minimal maintenance, are easy to clean and do not need any painting. The aesthetic beauty of WoodN makes it suitable for the most innovative projects. Several worldwide installations show the versatility and reliability of the material in any climatic environment.

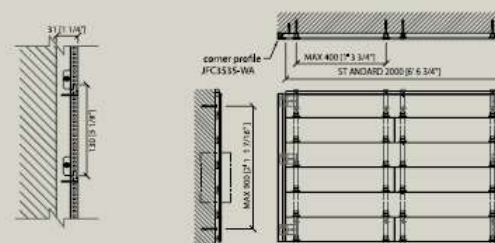
THI4830HD4



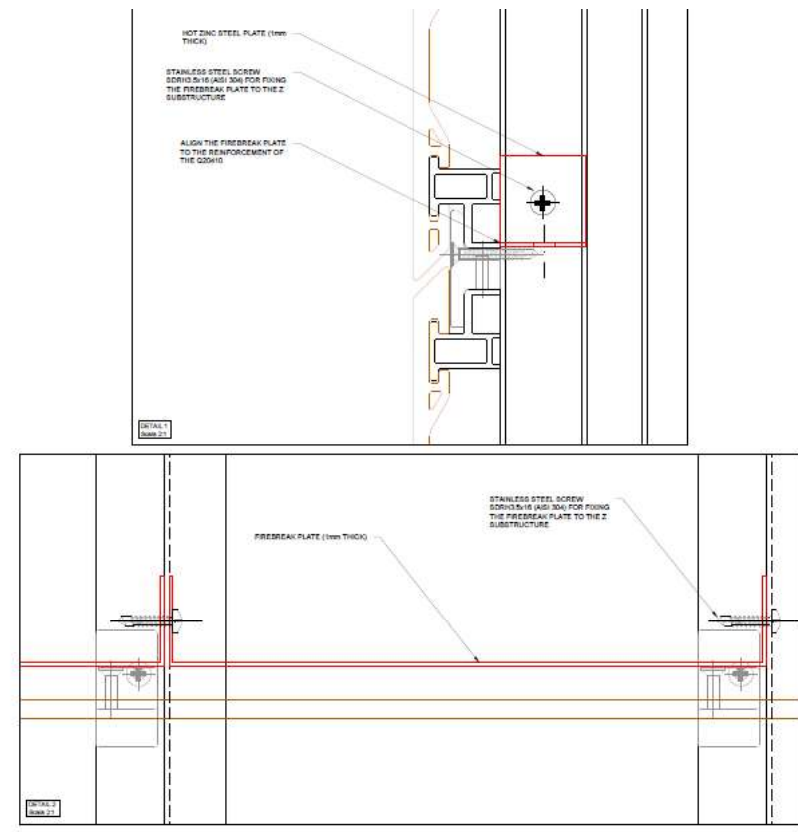
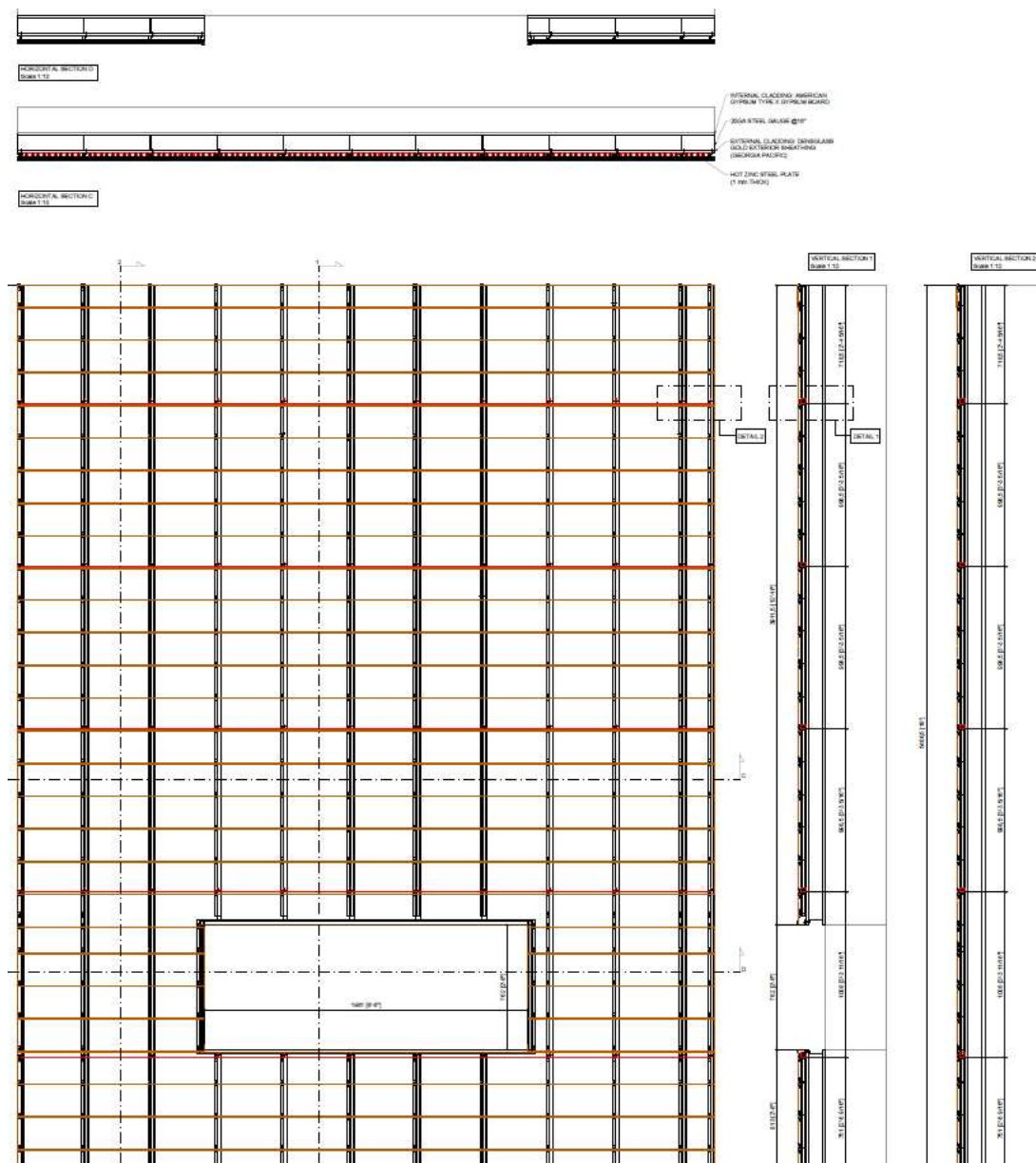
Q20410



Q13010HD



WOODN



NOTES:

1. FIREBREAK TO BE CUT AND BEND ON SITE
2. THE FIREBREAK HAS TO BE INSTALLED EVERY MAX. 3' 3 $\frac{1}{2}$ " (3 PLANKS)



WOODN Industries s.r.l.

Via Caffè, 17
32100 - Belluno (BL)
Italy
Tel. 0437/590700
Fax: 0437/590900
info@woodn.com
www.woodn.com

Surbow Environmental Decoration Material
Co. Ltd
Dong Rui Industrial Park, Dong Sheng Town
Zhongshan City, Guangdong Province
China
Tel: 0086 760 28115556
Fax: 0086 760 28148500

Project name:

NFPA 285 - Panel Design
firebreak profile

Gardner, Robert

- All dimensions have to be verified by installer and following the final conditions.
- The laying temperature should be greater than 0°C. Voids the material is laid at temperatures close to the installation temperature for at least 48 hours prior to installation.
- The packages on the site should be kept in a dry place, away from the whole surface, in a dry, clean area, protected from frost and from direct exposure from sunlight.
- During handling the bags must be kept away from the fire.
- When removing the carpet be careful not to cut asphalt or damage the Woods.
- Be careful not to spill the material with oil and/or other substances. If happens, it is allowed to use solvents immediately. Use water if necessary. The material is not contaminated in the Woods technical and/or contract technical files for advice.
- Profiles shall be handled with care in order to prevent damages.
- If the verified during disposal, the material should be used according to each other:
- Prevent the formation of dust on profiles and between them. In particular, ensure that any mechanical pressure carried out on other materials than Woods products, do not determine the accumulation of chips or dust on the surface.

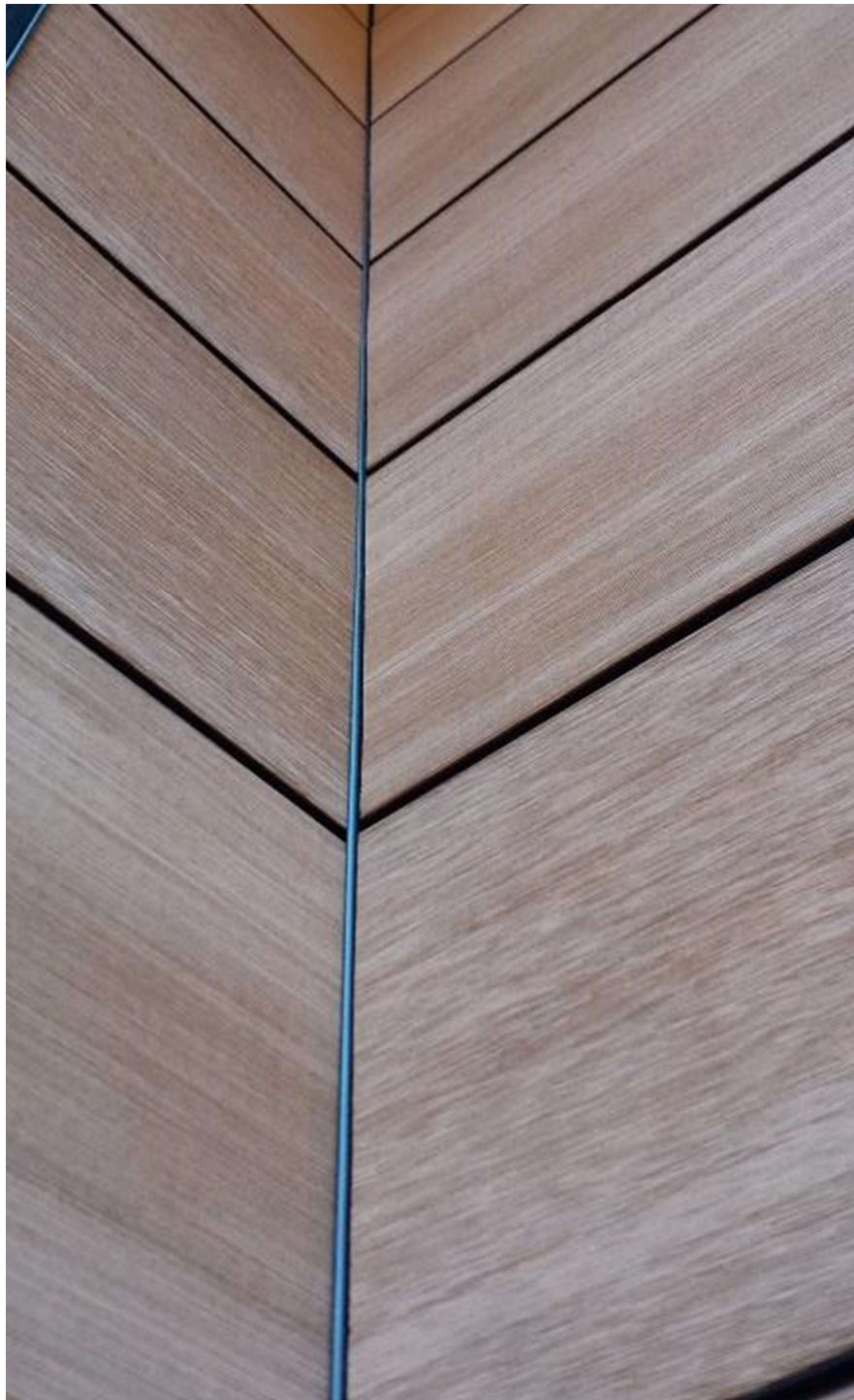
Notes for assembly:

intertek
Total Quality Assured.

Report #: G8168.01-121-24

Date: 03/17/17

Verified by:



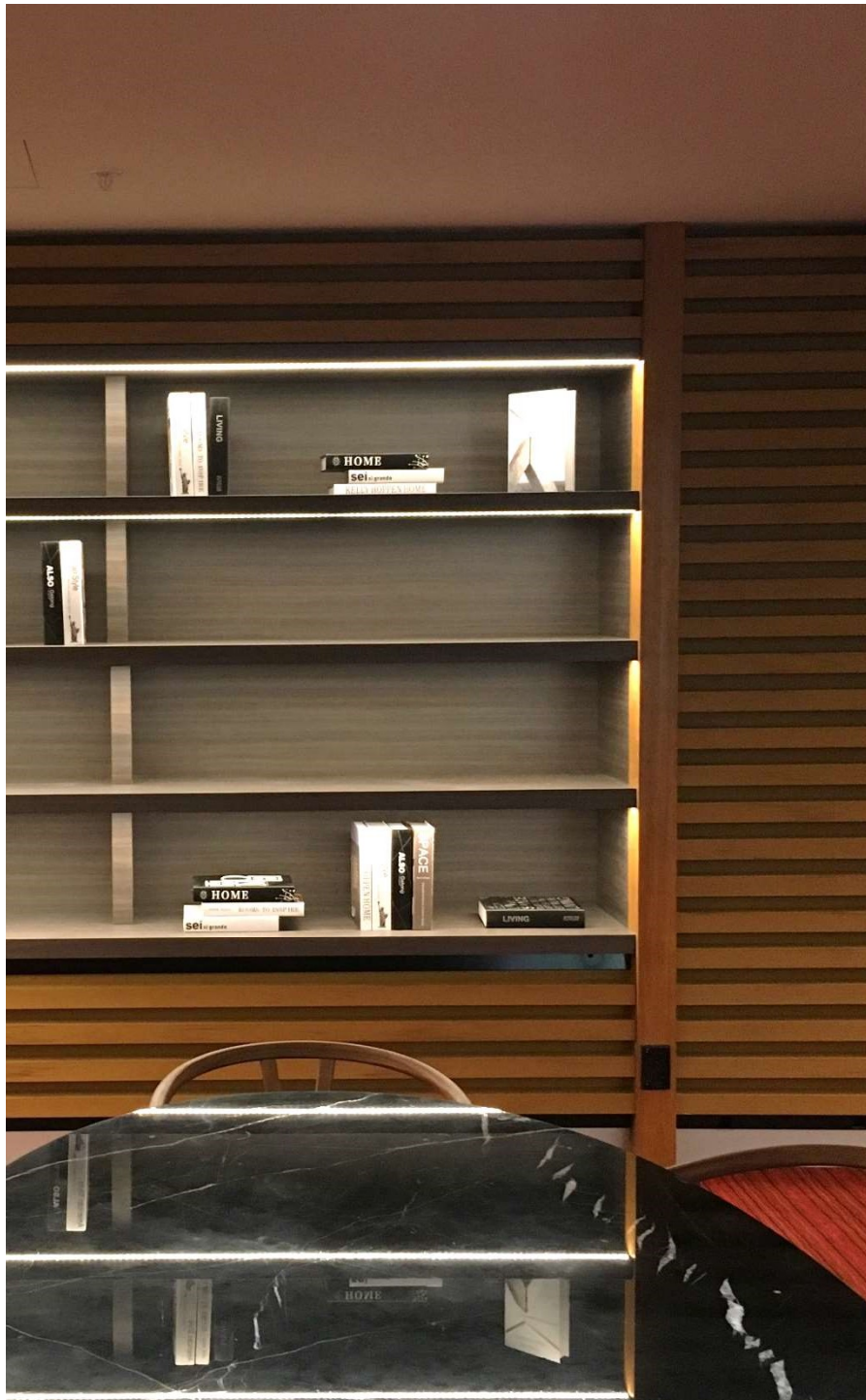
[wall cladding - USA]



[wall cladding - USA]

[wall cladding - italy]



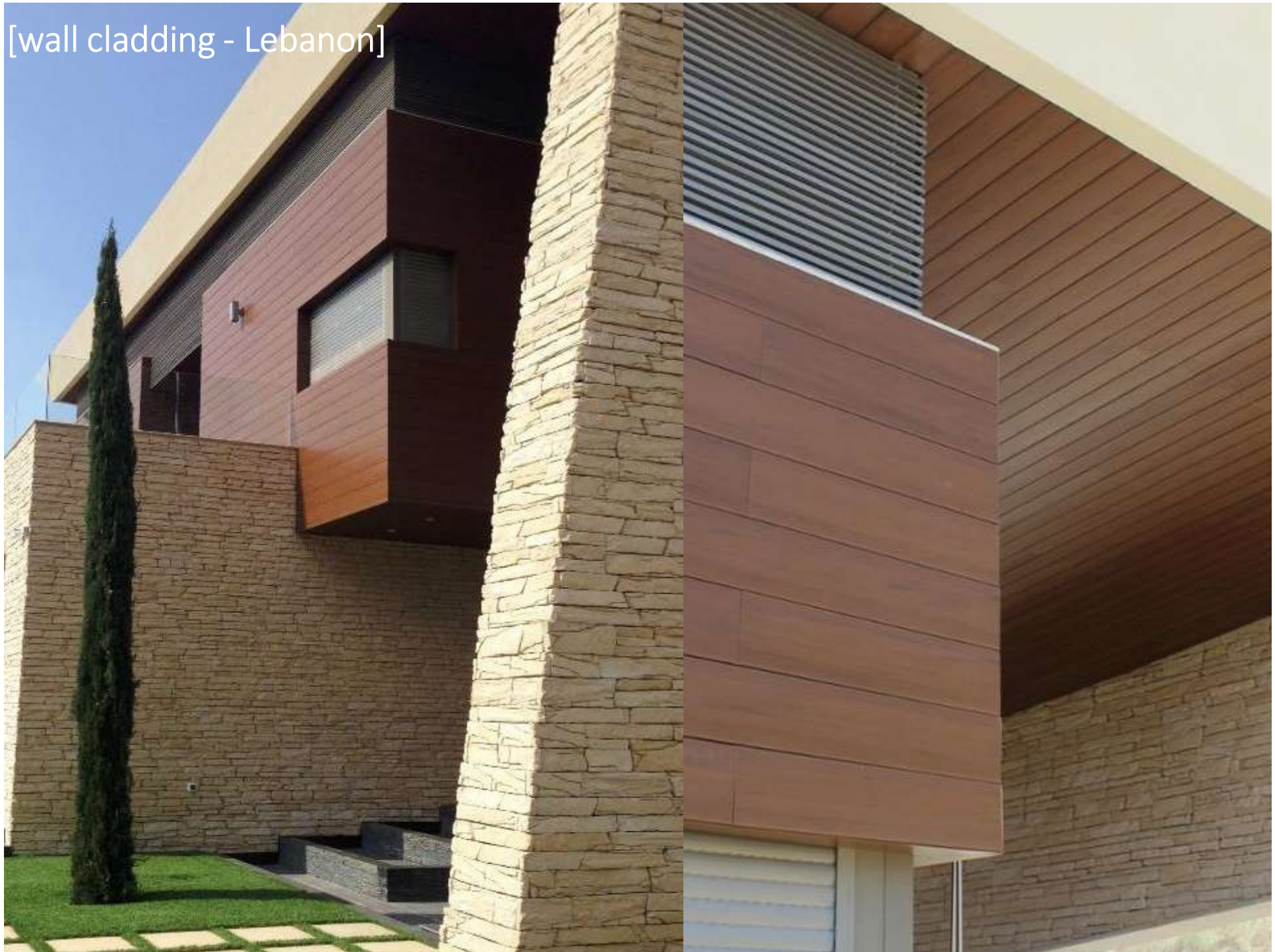


[wall cladding - australia]



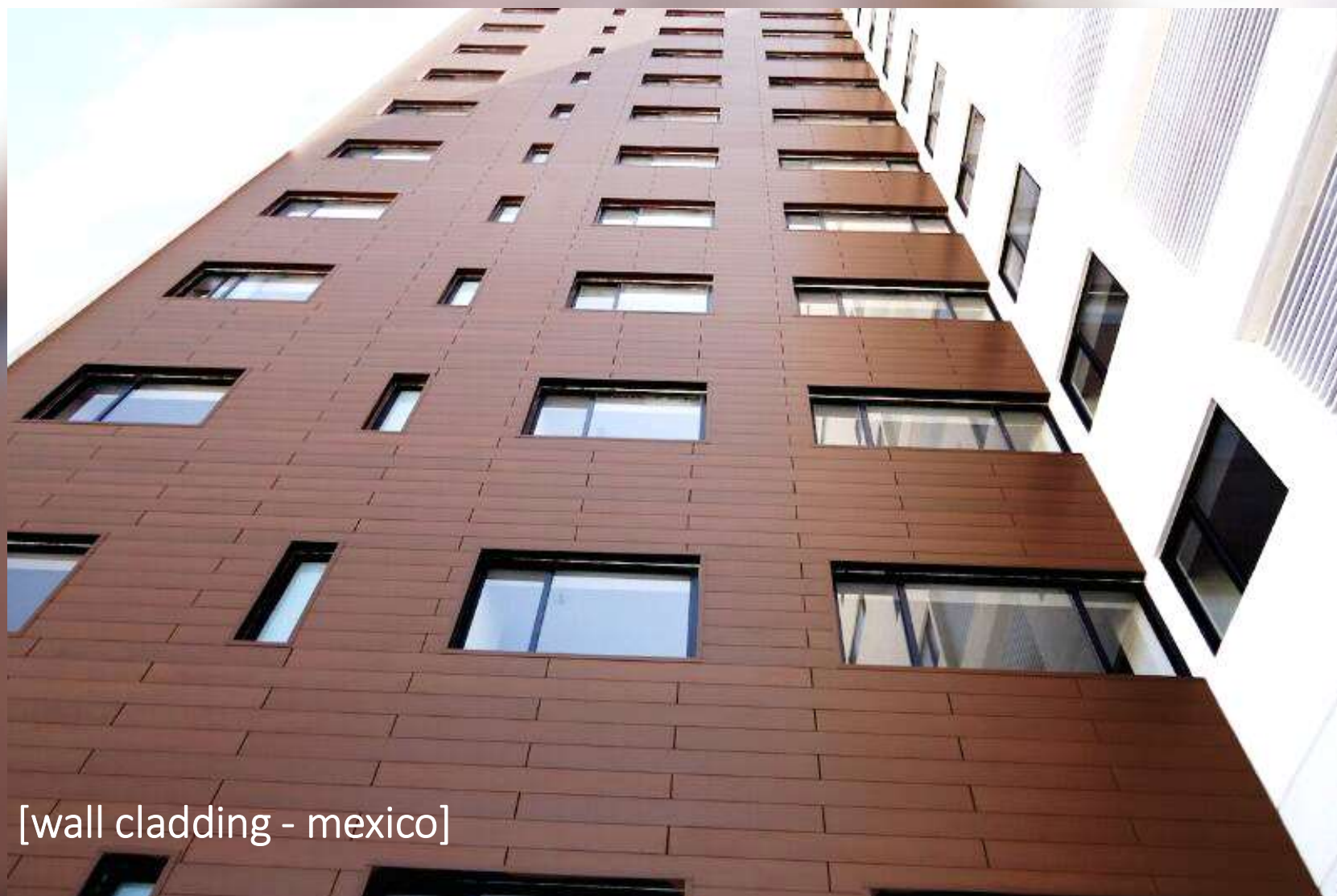
[outdoor cladding- india]

[wall cladding - Lebanon]





[wall cladding - lebanon]



[wall cladding - mexico]

[ceiling & cladding – lebanon]



WOODN

IDEAS
AND
SOLUTIONS

NATURALLY
WITH
BAMBOO



PERGOLE

Dal classico pergolato che poggia su pilastri a quello a sbalzo senza sostegni verticali, WoodN fornisce soluzioni su misura grazie alla versatilità dei suoi profili, combinando il calore e l'estetica del legno alla durata e alle qualità meccaniche del materiale.

Il supporto progettuale WoodN fa sì che ogni pergola venga pre-calcolata per definirne al meglio i profili e i relativi rinforzi metallici; i dettagli delle connessioni sono poi studiati per garantire sistemi di fissaggio nascosti. Il risultato è un elemento architettonico che risponde alle necessità progettuali nel rispetto dell'ambiente circostante.

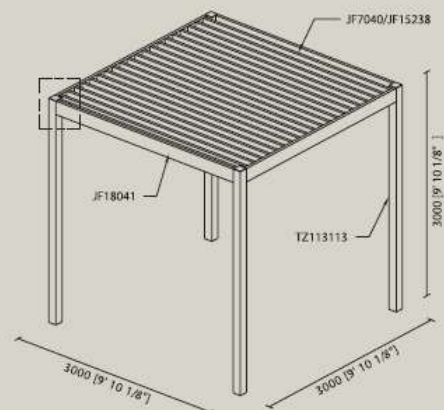
PERGOLAS

From the classic pergola on vertical supports, to the cantilever canopy, WoodN provides tailored solutions thanks to the versatility of its profiles, combining the warmth and the beauty of wood with the durability and the mechanical properties of the material.

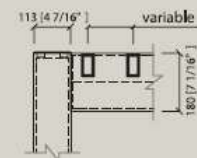
The technical department of WoodN is involved in every project. Each pergola is pre-calculated in order to define the profiles and its metal reinforcements, the details of the installation are then designed to guarantee concealed fastening systems. The result is an architectural element that meets the project's needs and respects the environment.



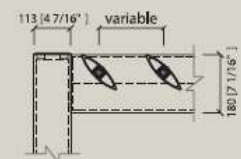
MODELLO/MODEL
ISOLA



OPZIONE/OPTION
JF7040

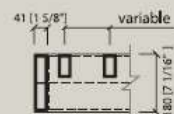
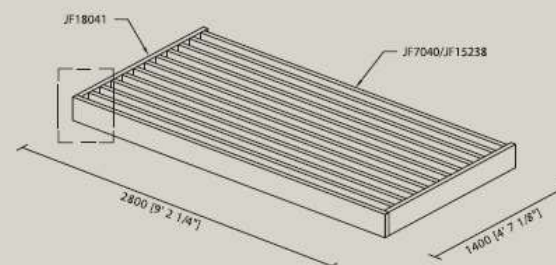


OPZIONE/OPTION
JF15238

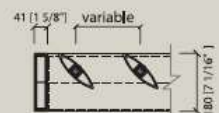


OPZIONE/OPTION
JF7040

MODELLO/MODEL
CANOPY



OPZIONE/OPTION
JF15238



WOODN

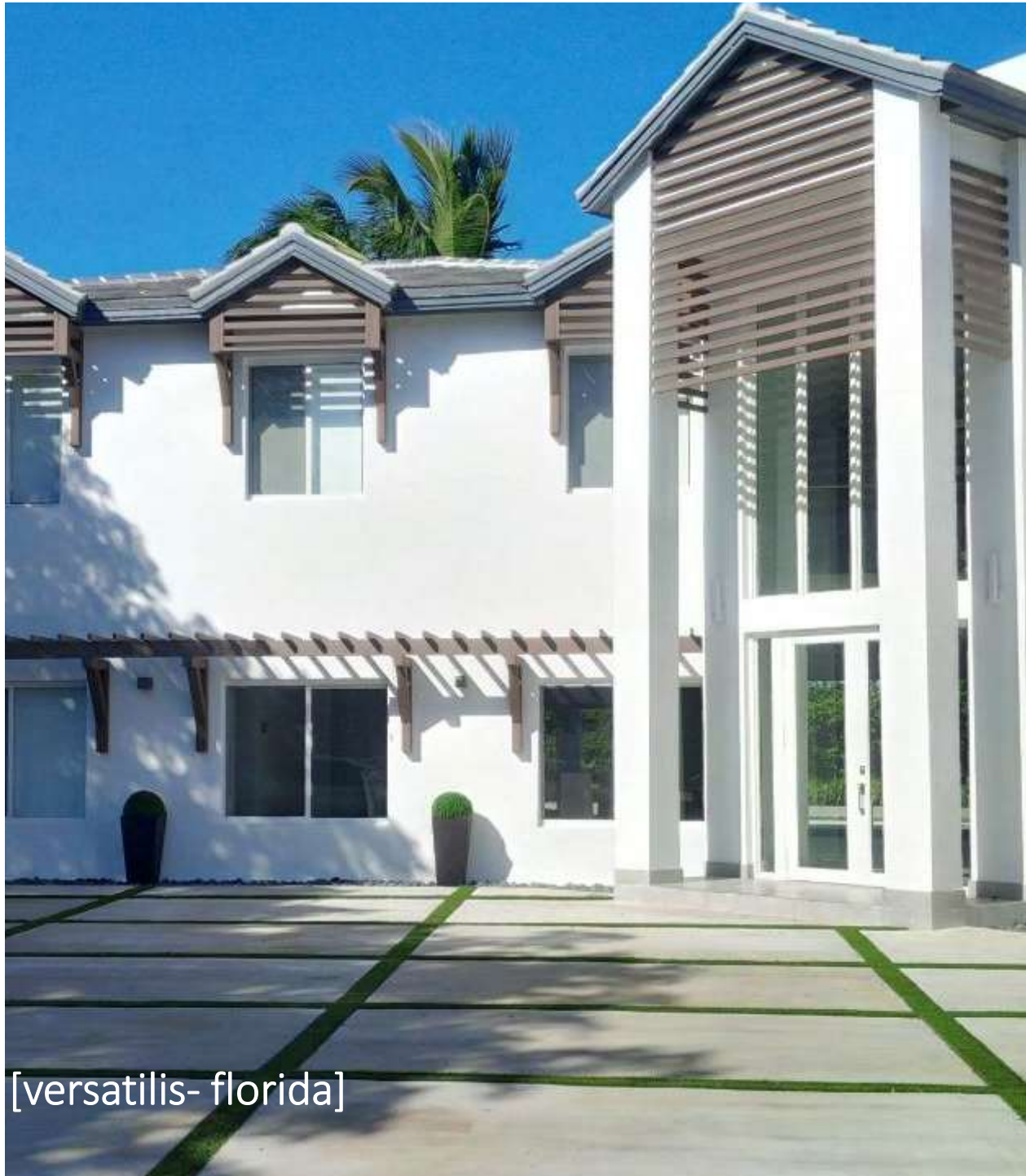


[pergola- dubai]

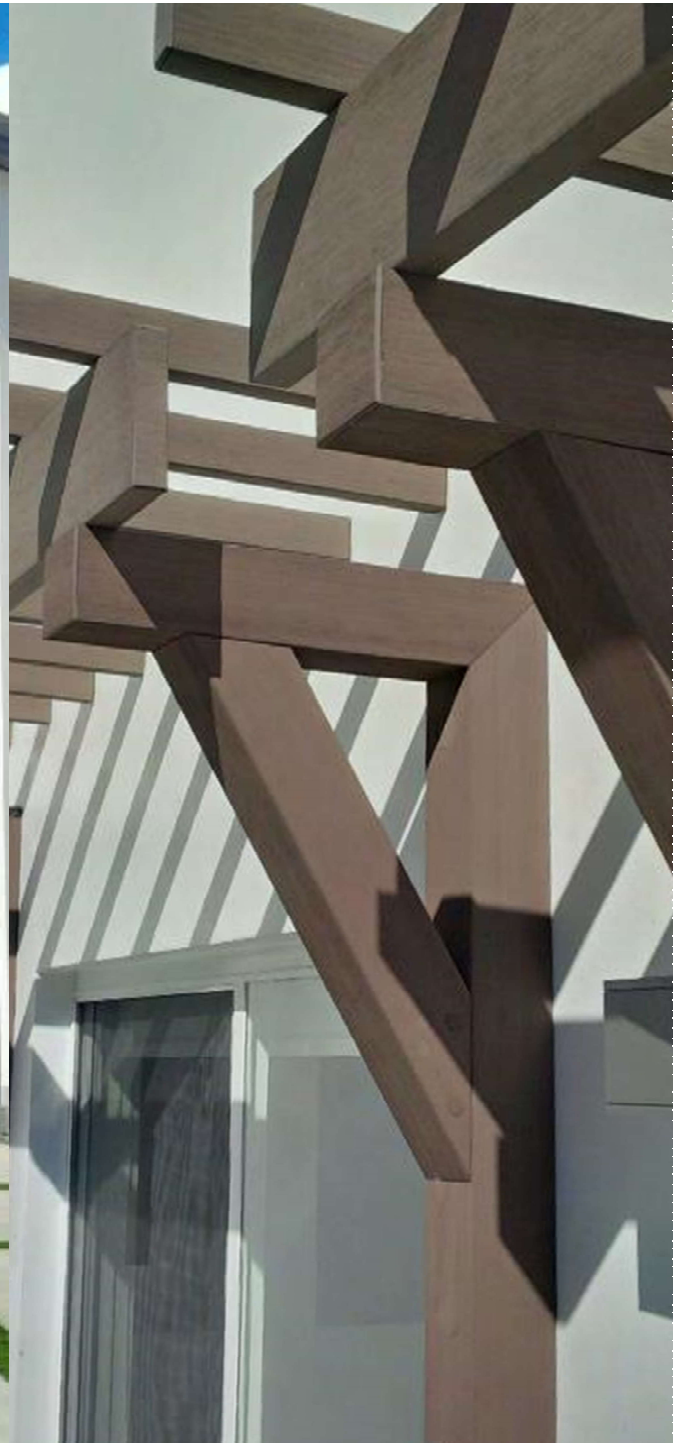


[pergola- florida]





[versatilis- florida]



[pergolas- dubai]



[bathing hut - italy]



CONTROSOFFITTO

Il controsoffitto non solo ridimensiona l'altezza degli ambienti interni ed esterni, ma coniuga la possibilità di nascondere il passaggio di impianti con un'ottima resa estetica.

I controsoffitti WoodN possono essere facilmente forati e lavorati in loco per poter adattarsi a ospitare impianti di condizionamento, aerazione e illuminazione. Il sistema di installazione a scatto e la possibilità di smontare, se necessario, la singola doga li rende estremamente semplici da maneggiare e veloci da installare.

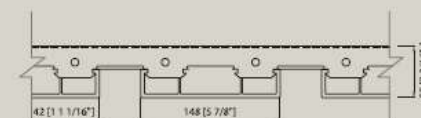
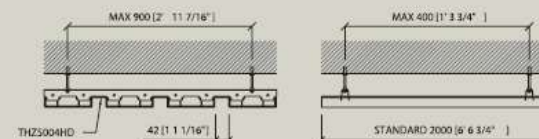
Il sistema è composto dai leggeri profili in WoodN, caratterizzati da un eccellente comportamento al fuoco, e da una sotto-struttura di ferro zincato e verniciato che può rimanere a vista o essere nascosta. Il controsoffitto può essere posato sia in ambienti interni che esterni, combinando efficienza, funzionalità ed estetica.



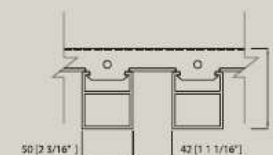
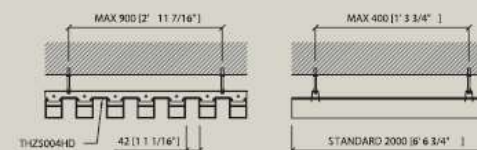
CEILING

The ceiling system does not simply resize the height of internal and external environments, but combines as well the ability to hide the passage of facilities, with an excellent aesthetic result. The Woodn ceilings can be easily drilled and cut on site, in order to install fire sprinklers or air conditioning and lighting systems. The snap-on installation system and the possibility to remove, if necessary, the single board make the system extremely easy to handle and quick to install. The system is composed by the light Woodn profiles, characterized by an excellent fire behavior, and a coated galvanized substructure that can be visible or concealed. The ceiling can be installed indoor and outdoor, combining efficiency, functionality and aesthetic.

THI4830HD4



TH6050HD





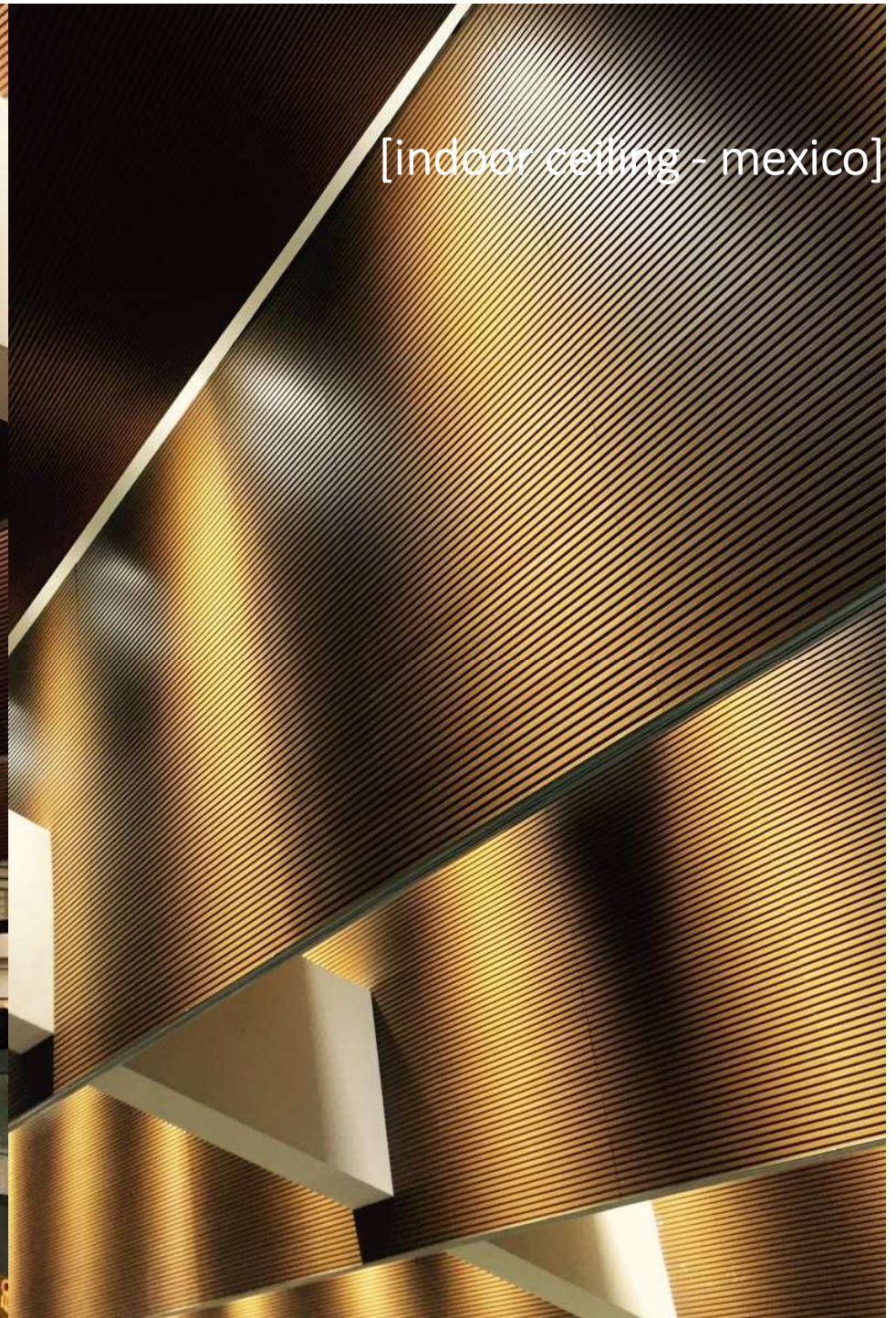
[ceiling- lebanon]

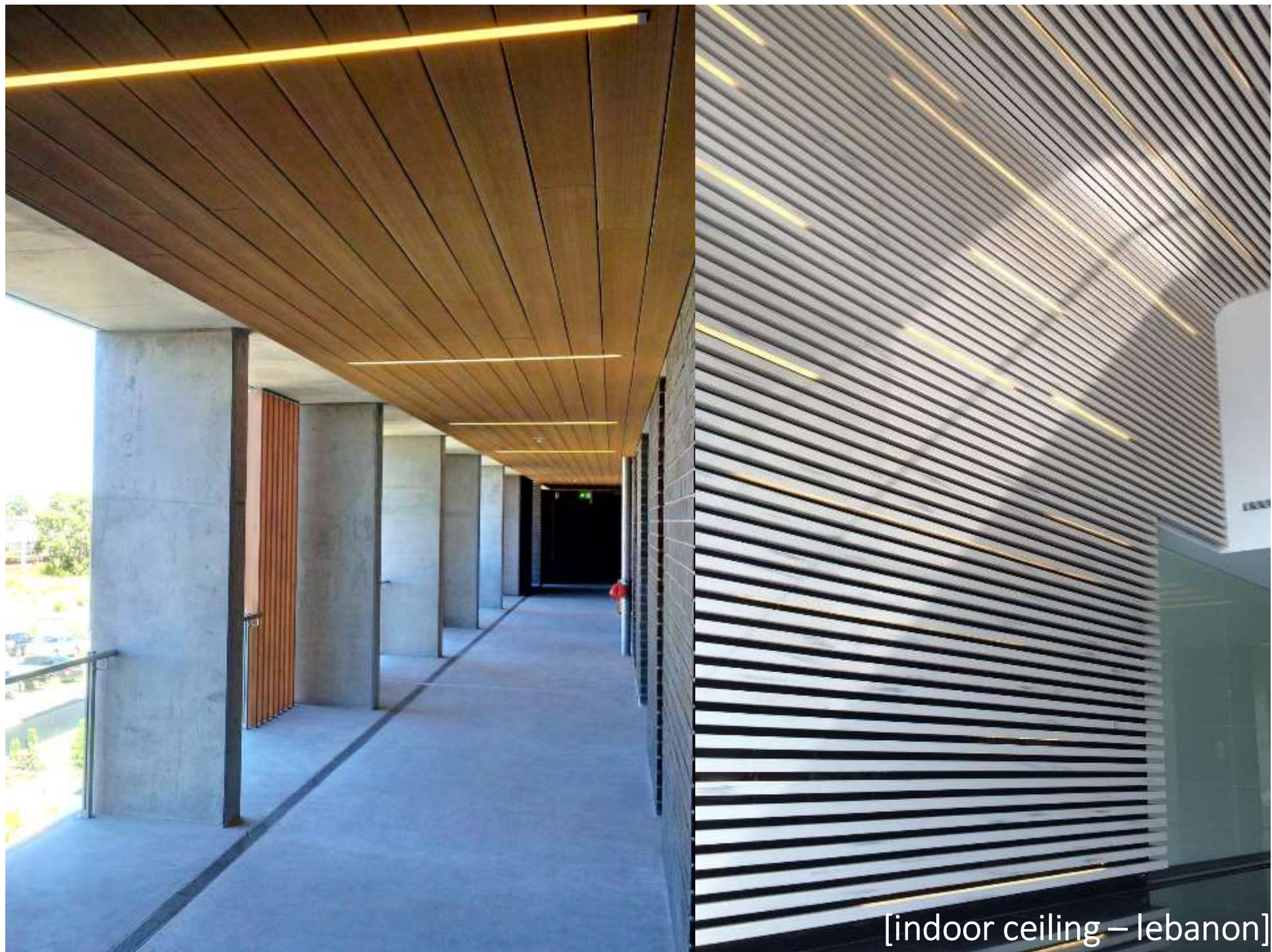


[indoor ceiling - italy]



[indoor ceiling - mexico]

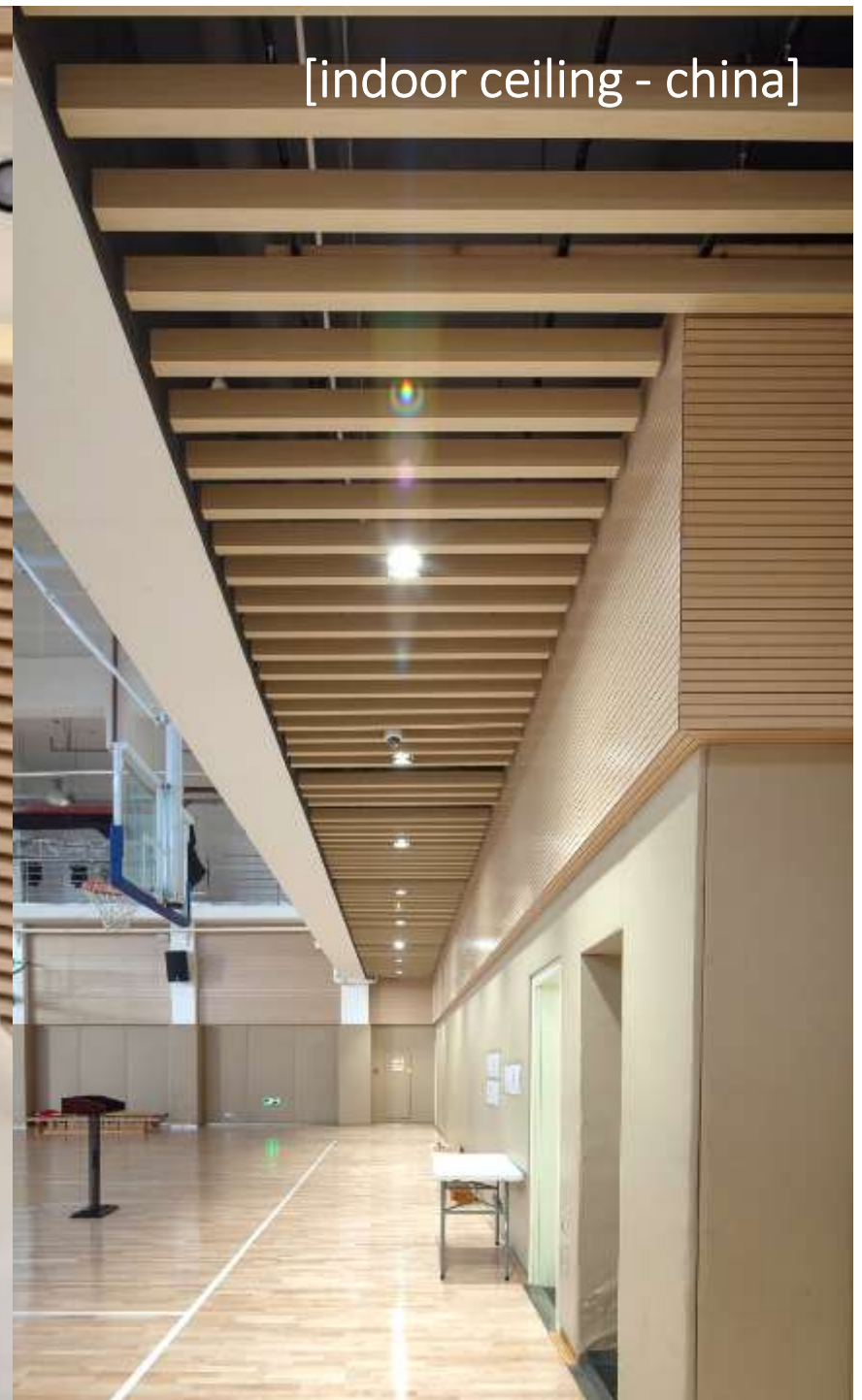




[indoor ceiling – lebanon]



[outdoor ceiling – china]





[ceiling - florida]





[indoor siding - lebanon]



[indoor siding – mexico]





[indoor siding – Panama]

[indoor siding - lebanon]





[outdoor siding - mexico]



[outdoor furniture - italy]

thanks !

